

Phone: +385 1 6259 373
+385 1 6259 589
+385 1 6259 372
+385 1 6259 381

AFS: LDZAYOYX

Email: aip@crocontrol.hr

URL: <https://www.crocontrol.hr>



**HRVATSKA KONTROLA
ZRAČNE PLOVIDBE**

Hrvatska kontrola zračne plovidbe d.o.o.
Služba zrakoplovnog informiranja (AIM/AIS)
Rudolfa Fizira 2
10410 Velika Gorica, p.p. 103
Hrvatska

AIRAC AIP SUP 007/2024

Na snazi od: 03-Oct-2024

Vrijedi do: UFN

Datum izdavanja: 22-Aug-2024

LDDU – Zračna luka DUBROVNIK/Ruđer Bošković - Probni zrakoplovni navigacijski postupci

Ovaj AIRAC AIP SUP sadrži sljedeće probne zrakoplovne navigacijske postupke:

- SID RNAV RWY 11 (LDDU AD 2.24.8 SID RNAV RWY 11);
- SID RNAV RWY 29 (LDDU AD 2.24.8 SID RNAV RWY 29);
- STAR RNAV RWY 11 (LDDU AD 2.24.10 STAR RNAV RWY 11);
- STAR RNAV RWY 29 (LDDU AD 2.24.10 STAR RNAV RWY 29);

Postupci će se koristiti samo u svrhu letne validacije od strane onog operatora kojeg je odobrila Hrvatska kontrola zračne plovidbe d.o.o., i u skladu s dobivenim odobrenjem ATC Dubrovnik.

Upišite AIRAC AIP SUP 007/2024 u GEN 0.3.

REF AIP: LDDU AD 2

OVA STRANICA JE NAMJERNO OSTAVLJENA PRAZNA

STANDARD DEPARTURE CHART
INSTRUMENT (SID) - ICAO

TRANSITION ALTITUDE
10 000

DUBROVNIK ATIS	118.425
DUBROVNIK TOWER	129.500
DUBROVNIK RADAR	123.600
DUBROVNIK DELIVERY	125.400

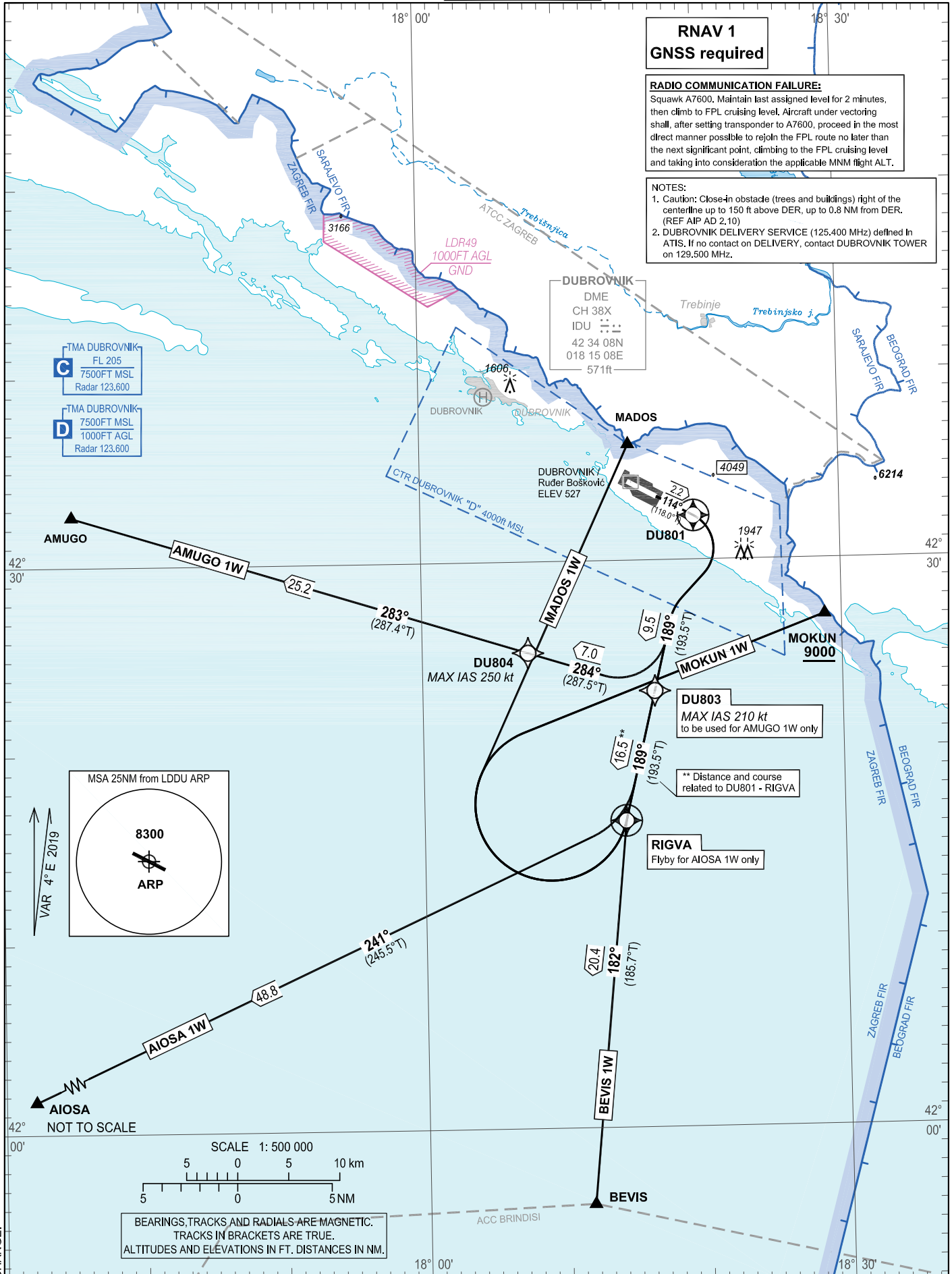
DUBROVNIK / Ruder Bošković (LDDU)

MOKUN 1W BEVIS 1W AIOSA 1W
AMUGO 1W MADOS 1W RNAV RWY 11

RNAV 1
GNSS required

RADIO COMMUNICATION FAILURE:
Squawk A7600. Maintain last assigned level for 2 minutes, then climb to FPL cruising level. Aircraft under vectoring shall, after setting transponder to A7600, proceed in the most direct manner possible to rejoin the FPL route no later than the next significant point, climbing to the FPL cruising level and taking into consideration the applicable MNM flight ALT.

NOTES:
1. Caution: Close-in obstacle (trees and buildings) right of the centerline up to 150 ft above DER, up to 0.8 NM from DER. (REF AIP AD 2.10)
2. DUBROVNIK DELIVERY SERVICE (125.400 MHz) defined in ATIS. If no contact on DELIVERY, contact DUBROVNIK TOWER on 129.500 MHz.



CHANGE:

DUBROVNIK / Ruđer Bošković (LDDU)

MOKUN 1W BEVIS 1W AIOSA 1W
RNAV RWY 11 AMUGO 1W MADOS 1W

GENERAL INFORMATION AND REQUIREMENTS FOR ALL SIDs

- MNM PDG 5.0 per cent (304 FT/NM) up to 2300 ft.
- After take-off climb initially 8000 ft AMSL.
- Unless otherwise instructed, after passing 3000 ft contact DUBROVNIK RADAR on 123.600 MHz.

LDDU RNAV STANDARD INSTRUMENT DEPARTURE RWY 11

Proposed tabular description for navigation database coding

Serial number	Route	Path descriptor	Waypoint name	Flyover	Course	Magnetic variation	Distance (NM)	Turn direction	Altitude (ft)	Speed (kt)	Remarks	NAV SPEC
					°M (°T)							
010	MOKUN 1W	CF	DU801	Y	114°	4°E	2.2	-	-	-	-	RNAV 1
					(118.0°T)							
020		CF	RIGVA	Y	189°	4°E	16.5	-	-	-		
					(193.5°T)							
030		DF	MOKUN	-	-	4°E	-	R	+9000	-		
010	BEVIS 1W	CF	DU801	Y	114°	4°E	2.2	-	-	-	-	RNAV 1
					(118.0°T)							
020		TF	RIGVA	Y	189°	4°E	16.5	-	-	-		
					(193.5°T)							
030		TF	BEVIS	-	182°	4°E	20.4	-	-	-		
					(185.7°T)							
010	AIOSA 1W	CF	DU801	Y	114°	4°E	2.2	-	-	-	-	RNAV 1
					(118.0°T)							
020		TF	RIGVA	-	189°	4°E	16.5	-	-	-		
					(193.5°T)							
030		TF	AIOSA	-	241°	4°E	48.8	-	-	-		
					(245.5°T)							
010	AMUGO 1W	CF	DU801	Y	114°	4°E	2.2	-	-	-	-	RNAV 1
					(118.0°T)							
020		TF	DU803	-	189°	4°E	9.5	-	-	-210		
					(193.5°T)							
030		TF	DU804	-	284°	4°E	7.0	R	-	-250		
					(287.5°T)							
040		TF	AMUGO	-	283°	4°E	25.2	-	-			
					(287.4°T)							
010	MADOS 1W	CF	DU801	Y	114°	4°E	2.2	-	-	-	-	RNAV 1
					(118.0°T)							
020		CF	RIGVA	Y	189°	4°E	16.5	-	-	-		
					(193.5°T)							
030		DF	MADOS	-	-	4°E	-	R	-	-		

CHANGE:

Waypoint coordinates		
Waypoint name	WGS-84 latitude	WGS-84 longitude
AIOSA	415542N	0171454E
AMUGO	423239N	0173502E
BEVIS	415558N	0181140E
MADOS	423609N	0181457E
MOKUN	422701N	0182848E
RIGVA	421613.8N	0181421.6E
DU801	423219.1N	0181933.3E
DU802	422109.3N	0181531.3E
DU804	422510.7N	0180733.1E

CHANGE:

OVA STRANICA JE NAMJERNO OSTAVLJENA PRAZNA
THIS PAGE INTENTIONALLY LEFT BLANK