



015°30' 016°00' 016°30' 017°00'

**FIC LJUBLJANA**  
FREQ: 118.480 MHz

**CERKLEJE OB KRKI**  
L 463  
CH 123Y  
GND LIP

**CERKLEJE OB KRKI**  
L 463  
CH 123Y  
GND LIP

**CERKLEJE OB KRKI**  
L 463  
CH 123Y  
GND LIP

**CERKLEJE OB KRKI**  
L 463  
CH 123Y  
GND LIP

**CERKLEJE OB KRKI**  
L 463  
CH 123Y  
GND LIP

**CERKLEJE OB KRKI**  
L 463  
CH 123Y  
GND LIP

**CERKLEJE OB KRKI**  
L 463  
CH 123Y  
GND LIP

**CERKLEJE OB KRKI**  
L 463  
CH 123Y  
GND LIP

**CERKLEJE OB KRKI**  
L 463  
CH 123Y  
GND LIP

**CERKLEJE OB KRKI**  
L 463  
CH 123Y  
GND LIP

**WARNING:**  
Not for operational use!  
**VFR CHART-SECTOR 5**  
Eff. date: 18 APR 2024  
**NOT TO SCALE!**  
© Copyright CROATIA CONTROL Ltd.





# SECTOR 5 OF VFR CHART WITH RECOMMENDED VFR ROUTES

## CROATIA

Effective date: VFR 18 APR 2024  
For latest aeronautical information consult AIP, AIP-Supplements and NOTAMS

**NOT TO SCALE!**

### ATTENTION:

Data on prominent transmission lines not complete!  
No guarantee for the completeness and accuracy of obstacles!  
Spot elevations and contour lines are in feet!

WARNING: Charts are for information only. Not for operational use!

**NOTE:**  
FOR AERODROME OPENINGS  
CONSULT RELEVANT PUBLICATIONS!

**NOTE:**  
FOR AERONAUTICAL DATA  
OUTSIDE THE AIRSPACE OF ZAGREB FIR  
CONSULT RELEVANT PUBLICATIONS

### LEGEND

#### Topography

- Contour
- Approximate contour
- Bluff, cliff or escarpment
- Mountain pass with elevation in ft AMSL
- Spot elevation in ft AMSL
- Highest spot elevation in ft AMSL in Croatia

#### Hydrography

- National park, natural park
- Shore line
- Salt pans
- Large river
- River
- Small river, brooks
- Lake
- Swamp

#### Culture

- Built-up areas
- City, town, village
- Dual highway with connectors
- Dual highway tunnel
- Highway
- Highway under construction
- Primary road
- Secondary road
- Road under construction
- Road bridge
- Road tunnel
- Railroad (single track)
- Railroad (two or more tracks)
- Railroad bridge
- Railroad tunnel
- Cable way
- Zip line
- Transmission line
- Isogonic line

**Aerodromes**  
Airport: name, location indicator, AD elevation in ft AMSL, RWY length in metres  
Joint civil and military airport: name, location indicator, AD elevation in ft AMSL, RWY length in metres  
Airfield: name, location indicator, AD elevation in ft AMSL, RWY length in metres  
Closed water aerodrome

**Radio Navigation Aids**  
VOR: Compass rose oriented on the chart to Magnetic North (VAR 2019)  
VOR/DME: Collocated VOR and DME radio navigation aids, DME  
NDB: Non-directional radio beacon

**Air Traffic Services**  
Flight Information Region (FIR)  
Line of Responsibility (LoR)  
Boundaries (International)

**Control zone (CTR)**  
Designation of CTR  
Airspace classification  
Vertical limit  
TWR Frequency

**Aerodrome traffic zone (ATZ)**  
Designation  
Airspace classification  
Vertical limit

**Areas with possible radio communication difficulties for low level flights**

**Terminal control area (TMA), airspace class. C,D**  
**Terminal control area (TMA), airspace class. E**

**Prohibited, Restricted and Danger area**  
Active only as notified by NOTAM  
Nationally letter  
P-Prohibited  
R-Restricted  
D-Danger

**Danger area over high seas**

**Temporary reserved and segregated area**  
From GND to 1000FT active only as notified by NOTAM.  
TR=Temporary reserved  
TS=Temporary segregated

**FLEXIBLE STRUCTURES**  
LD111: Flexible structures LD111 can be activated as D-AMA, TRA, TSA. See AIP, ENR 1.9.2. For all Danger areas, TRAs and TSAs see AIP, ENR 5.1.5.2

**Low level military flight corridors and training areas**

**Reporting point**

**Holding fix with WGS-84 coordinates**

**Entry/exit point**

**Breakpoint description along Recommended VFR route**

**PANON2**  
**ADRIA1**  
**VELEB1**  
**GORAN1**

Recommended VFR route

VFR recommended route in Bosnia and Herzegovina

VFR transit route in Slovenia

Mandatory (arrival - departure) VFR route

Paragliding and hang gliding activity zone (vertical limit GND-1000 AGL, if not specified on the chart)

Parachute activity zone, Vertical limits

Glider activity zone:  
Glider, paragliding and hang gliding activity zone

**Obstacles**  
Obstacles or group of obstacles with a height of the order of 100 m AGL - lighted  
Elevation on top in ft AMSL  
Obstacles or group of obstacles  
Obstacle 45 m AGL and higher - lighted  
Obstacles or group of obstacles - unlighted  
Obstacle with no elevation data  
Oil or gas rig  
Group of wind turbines, lighted

Temporary border of the territorial sea according to the 2002 Protocol.  
Copyright © HHI

**CONVERSION SCALE**

**ELEVATION TINTS**

Metres  
Feet

**KARST FIELDS**

VOR/DME	CH	FREQ	INFO
BARNA	CH 121X	117.400MHz	45 44 52.08N 017 08 48.29E
DUBROVNIK	CH 101X	115.400MHz	42 33 13.84N 018 16 36.79E
LOŠINJ	CH 120Y	117.350MHz	44 33 59.44N 014 23 27.79E
PULA	CH 49Y	111.250MHz	44 53 32.52N 013 55 05.23E
RUEKA	CH 125X	117.800MHz	45 13 26.85N 014 34 01.06E
SPLIT	CH 104X	115.700MHz	43 29 47.69N 018 18 17.00E
ZADAR	CH 23X	108.600MHz	44 05 43.16N 015 21 51.22E
ZAGREB	CH 84X	113.700MHz	45 53 44.01N 016 18 24.11E

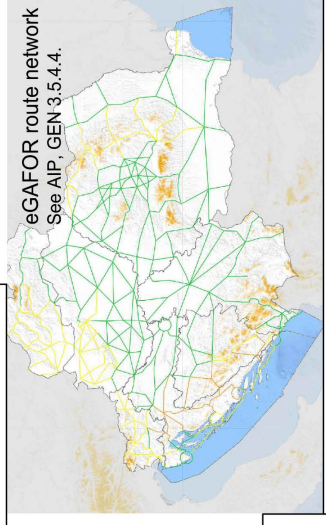
DME	CH	FREQ	INFO
BRC	CH 101Y	117.400MHz	43 16 56.93N 016 37 20.83E
IDU	CH 38X	115.400MHz	42 34 08.19N 018 15 07.96E
JAPETIĆ	CH 123Y	117.350MHz	45 44 40.18N 015 36 29.45E
LOŠINJ	CH 21Y	114.250MHz	44 30 57.23N 014 29 27.66E
LUKAVEC	CH 35Y	115.960MHz	45 41 25.96N 015 59 32.90E
OSIJEK	CH 29Y	117.800MHz	45 27 58.26N 018 47 32.16E
OSIJEK	CH 48X	115.700MHz	45 27 51.96N 018 47 59.67E
PETROVA GORA	PTG CH 17Y	115.700MHz	45 18 46.05N 015 48 20.06E
SPLIT	CH 42X	115.700MHz	43 31 57.61N 016 17 20.86E
ZAGREB	CH 32X	109.500MHz	45 44 05.78N 016 03 12.42E

NDB	FREQ	INFO
BREZA	400KHz	45 25 25.14N 014 20 43.44E
CREŠ	433KHz	44 54 10.37N 014 24 59.57E
DRVENIK	418KHz	43 26 48.24N 016 08 37.08E
HUMAC	412KHz	43 17 13.88N 016 40 42.42E
KAKMA	330KHz	43 59 49.76N 015 29 47.31E
KAVRAN	265KHz	44 53 43.27N 014 00 29.66E
KLP	318KHz	42 40 09.42N 018 01 15.07E
KOLOČEP	429KHz	44 31 37.55N 014 28 22.25E
OSIJEK	422KHz	45 27 19.51N 018 50 15.39E
PISAROVINA	424KHz	45 36 18.10N 015 50 38.39E
PULA	351.5KHz	44 53 21.15N 013 45 12.66E
SALI	421KHz	43 56 16.30N 015 10 05.20E
TOUNJ	316KHz	45 14 53.22N 015 21 01.25E
TROGIR	378KHz	43 29 48.59N 016 13 20.78E
VRSAR	369KHz	45 12 36.66N 013 38 56.31E

L	FREQ	INFO
BOKANJAC	385KHz	44 10 09.29N 015 15 50.41E
CAVAT	397KHz	42 35 06.68N 018 12 45.51E
CEPIN	372KHz	45 31 42.33N 018 33 36.18E
GRUDA	414KHz	42 32 26.26N 018 19 14.97E
RUEKA	289KHz	45 08 15.04N 014 39 10.56E
S.KRALJEVEC	350KHz	45 48 20.96N 016 09 52.78E
VELIKA GORICA	325KHz	45 43 31.30N 016 02 41.44E
ZADAR	348KHz	44 05 40.45N 015 21 54.26E



**NOTE:**  
For entering CTR airspace two-way radio communication required. Contact Tower normally at reporting points or any other point but not later than 5 min prior to entering CTR.

**NOTE:**  
Low level flights in areas with mountainous terrain may encounter difficulties in establishing and maintaining radio communications with Zadar Approach.

### REPORTING POINTS

ABLAT	45 23 28N	013 37 34E
AIOŠA	41 55 42N	017 14 54E
ALIMO	45 28 57N	014 16 04E
ARMIX	45 28 57N	014 16 04E
BABAG	45 23 13N	017 07 37E
BAREB	45 44 46N	018 24 48E
BEDOX	46 15 58N	015 49 34E
BEVIS	41 55 58N	018 11 40E
BUGEY	45 27 56N	013 46 24E
CRAYE	41 30 10N	018 07 45E
PEVON	43 33 31N	017 02 24E
PODET	46 10 17N	017 07 36E
RASTU	44 56 32N	015 44 36E
REMPI	43 44 12N	016 49 22E
ROLBA	45 50 25N	015 39 18E
ROTAR	45 15 46N	012 59 44E
RUDJK	44 59 48N	016 18 18E
SABAD	45 27 57N	014 52 03E
SIRMI	44 09 00N	016 18 13E
SIVLA	45 06 07N	018 22 54E
SONIK	44 26 54N	016 08 36E
TEBLI	45 12 05N	016 40 33E
TEPKO	41 44 27N	018 25 41E
TIBRI	42 24 38N	018 33 15E
TORPO	43 33 51N	014 25 29E
TUAVAR	45 07 36N	019 04 39E
UNIBEK	45 32 40N	013 25 11E
UNIPA	44 01 46N	018 28 58E
VAKUŠ	42 00 51N	015 31 37E
VAPJU	45 08 06N	018 14 57E
VEBAL	45 59 29N	017 17 48E
VELIT	43 21 06N	017 16 38E
VELUG	44 29 14N	013 16 45E
VIBOP	44 59 57N	015 43 39E
XAMIT	43 18 42N	014 47 52E

### SIGNIFICANT VFR POINTS (Reporting and Entry/Exit point)

M1	45 07 31N	014 31 42E
MAZEV	42 29 12N	018 18 07E
N1	46 02 57N	016 05 04E
N2	45 51 22N	016 00 45E
N3	45 45 21N	016 00 45E
N4	45 18 16N	014 42 50E
N5	45 11 49N	013 44 52E
N6	44 16 55N	015 20 51E
O1	44 41 37N	014 23 36E
O2	44 12 04N	015 40 57E
O3	43 25 31N	016 41 49E
P1	45 15 31N	014 35 45E
P2	43 48 57N	015 40 05E
P3	45 48 51N	015 49 58E
P4	44 36 10N	014 29 55E
P5	44 31 30N	013 53 20E
PEPIM	44 11 11N	013 37 27E
R1	44 09 18N	015 02 04E
RORKA	43 29 18N	016 23 31E
S1	45 29 07N	015 59 31E
S2	45 42 30N	016 06 34E
S3	44 30 40N	014 18 26E
S4	43 23 46N	016 03 12E
S5	43 35 18N	015 55 28E
S7	44 44 07N	013 53 47E
S8	44 48 14N	013 59 51E
T1	44 40 04N	014 34 24E
T2	44 41 22N	014 16 46E
V1	44 18 07N	015 05 03E
V2	43 09 39N	013 21 57E
V3	44 34 33N	014 18 58E
W1	45 40 19N	015 39 04E
W2	44 04 22N	015 11 47E
W3	43 44 03N	015 41 11E
W4	44 59 38N	013 44 23E
W5	44 57 34N	013 51 06E
Z1	43 55 46N	015 48 08E