

Phone: +385 1 6259 373  
+385 1 6259 589  
+385 1 6259 372  
Fax: +385 1 6259 374  
AFS: LDZAYOYX  
Email: aip@crocontrol.hr  
URL: <http://www.crocontrol.hr>



**HRVATSKA KONTROLA  
ZRAČNE PLOVIDBE**

Hrvatska kontrola zračne plovidbe d.o.o.  
Služba zrakoplovnog informiranja (AIM/AIS)  
Rudolfa Fizira 2  
10410 Velika Gorica, p.p. 103  
Hrvatska

**AIRAC AIP SUP 005/2023**  
**Na snazi od: 18-May-2023**  
**Vrijedi do: UFN**  
**Datum izdavanja: 06-Apr-2023**

---

## **LDZD - Zračna luka ZADAR/Zemunik - Radovi na proširenju putničkog terminala**

Zbog radova vezanih za buduće proširenje putničkog terminala dodaju se dva privremena objekta vidljiva na karti.

Zbog operativnih razloga zatvorene su parkirna pozicija 6 i parkirna pozicija A.

Prilog ovom AIRAC AIP SUP-u je *Attachment 1: Index Aircraft parking/docking chart*

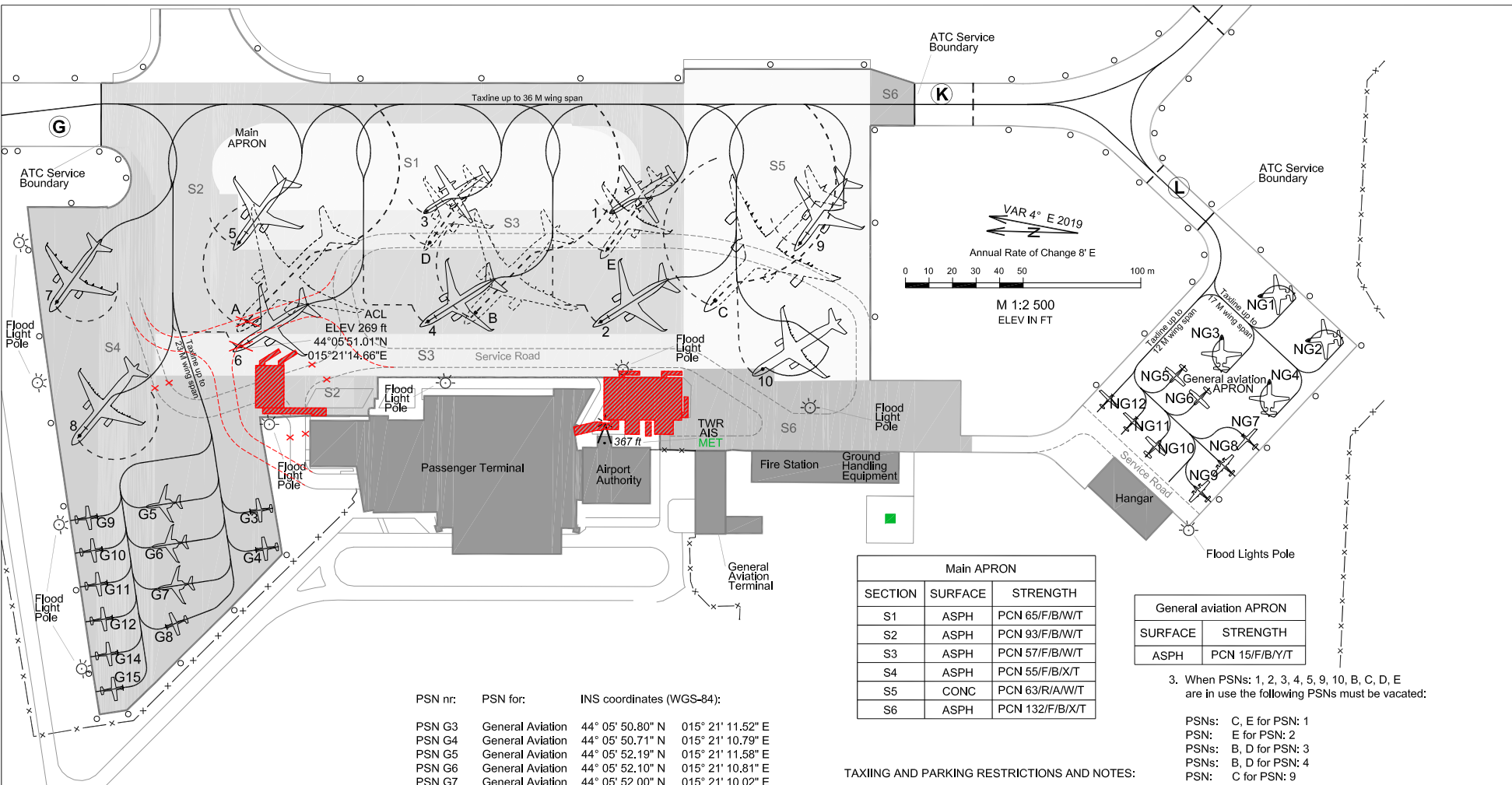
*Upišite AIRAC AIP SUP 005/2022 u GEN 0.3.*

U ovaj AIRAC AIP SUP inkorporiran je sljedeći NOTAM: A0486/23

NOTAM inkorporiran u ovaj AIRAC AIP SUP bit će poništen putem NOTAMC-a.

REF AIP: LDZD AD 2

OVA STRANICA JE NAMJERNO OSTAVLJENA PRAZNA



Main APRON		
SECTION	SURFACE	STRENGTH
S1	ASPH	PCN 65/F/B/W/T
S2	ASPH	PCN 93/F/B/W/T
S3	ASPH	PCN 57/F/B/W/T
S4	ASPH	PCN 55/F/B/X/T
S5	CONC	PCN 63/R/A/W/T
S6	ASPH	PCN 132/F/B/X/T

General aviation APRON	
SURFACE	STRENGTH
ASPH	PCN 15/F/B/Y/T

3. When PSNs: 1, 2, 3, 4, 5, 9, 10, B, C, D, E are in use the following PSNs must be vacated:

- PSNs: C, E for PSN: 1
- PSN: E for PSN: 2
- PSNs: B, D for PSN: 3
- PSNs: B, D for PSN: 4
- PSN: C for PSN: 9
- PSN: C for PSN: 10
- PSNs: 3, 4, D for PSN: B
- PSNs: 1, 9, 10, E for PSN: C
- PSNs: 3, 4, B for PSN: D
- PSNs: 1, 2, C for PSN: E

TAXIING AND PARKING RESTRICTIONS AND NOTES:

1. PSNs: 1-5, 7-10, B - E, NG1-NG4 selfmanoeuvring.  
 PSNs: G3-G15, NG5-NG12 push back.
2. When ACFT entry to PSNs: 1, 2, 3, 4, 5, 9, 10, B, C, D, E the following PSNs must be vacated:

- PSNs: C, E for PSN: 1
- PSNs: C, E for PSN: 2
- PSNs: B, D for PSN: 3
- PSNs: B, D, E for PSN: 4
- PSN: C for PSN: 9
- PSN: C for PSN: 10
- PSNs: 1, 2, 3, 4, 5, D, E for PSN: B
- PSNs: 1, 3, 5, 9, 10, D, E for PSN: C
- PSNs: 3, 4, B for PSN: D
- PSNs: 1, 2, C for PSN: E

4. When ACFT exit from PSNs: 2, 4, B, C, E the following PSNs must be vacated:

- PSN: B for PSN: 2
- PSN: 5 for PSN: B
- PSNs: 2, 3, 5, D for PSN: C
- PSN: B for PSN: E

5. For other restrictions adhere strictly to TWR directions and marshaller guidance.

PSN nr:	PSN for:	INS coordinates (WGS-84):	
PSN G3	General Aviation	44° 05' 50.80" N	015° 21' 11.52" E
PSN G4	General Aviation	44° 05' 50.71" N	015° 21' 10.79" E
PSN G5	General Aviation	44° 05' 52.19" N	015° 21' 11.58" E
PSN G6	General Aviation	44° 05' 52.10" N	015° 21' 10.81" E
PSN G7	General Aviation	44° 05' 52.00" N	015° 21' 10.02" E
PSN G8	General Aviation	44° 05' 51.89" N	015° 21' 09.30" E
PSN G9	General Aviation	44° 05' 52.95" N	015° 21' 11.34" E
PSN G10	General Aviation	44° 05' 52.87" N	015° 21' 10.72" E
PSN G11	General Aviation	44° 05' 52.79" N	015° 21' 10.08" E
PSN G12	General Aviation	44° 05' 52.71" N	015° 21' 09.42" E
PSN G14	General Aviation	44° 05' 52.63" N	015° 21' 08.75" E
PSN G15	General Aviation	44° 05' 52.54" N	015° 21' 08.09" E
PSN NG1	General Aviation	44° 05' 36.98" N	015° 21' 16.10" E
PSN NG2	General Aviation	44° 05' 36.31" N	015° 21' 15.28" E
PSN NG3	General Aviation	44° 05' 37.51" N	015° 21' 15.28" E
PSN NG4	General Aviation	44° 05' 36.84" N	015° 21' 14.45" E
PSN NG5	General Aviation	44° 05' 38.20" N	015° 21' 14.44" E
PSN NG6	General Aviation	44° 05' 37.86" N	015° 21' 14.02" E
PSN NG7	General Aviation	44° 05' 37.18" N	015° 21' 13.42" E
PSN NG8	General Aviation	44° 05' 37.50" N	015° 21' 12.92" E
PSN NG9	General Aviation	44° 05' 37.82" N	015° 21' 12.42" E
PSN NG10	General Aviation	44° 05' 38.33" N	015° 21' 13.28" E
PSN NG11	General Aviation	44° 05' 38.67" N	015° 21' 13.70" E
PSN NG12	General Aviation	44° 05' 39.01" N	015° 21' 14.12" E

PARKING POSITIONS AND INS REFERENCE POINTS:

PSN nr:	PSN for:	INS coordinates (WGS-84):	
PSN 1	MAX DH8D	44° 05' 45.94" N	015° 21' 17.42" E
PSN 2	MAX B738	44° 05' 46.06" N	015° 21' 15.31" E
PSN 3	MAX DH8D	44° 05' 48.50" N	015° 21' 17.33" E
PSN 4	MAX B738	44° 05' 48.45" N	015° 21' 15.23" E
PSN 5	MAX B738	44° 05' 51.07" N	015° 21' 16.65" E
PSN 7	MAX A320	44° 05' 53.56" N	015° 21' 15.43" E
PSN 8	MAX A321	44° 05' 53.20" N	015° 21' 12.88" E
PSN 9	MAX B738	44° 05' 43.35" N	015° 21' 16.90" E
PSN 10	MAX A321	44° 05' 43.82" N	015° 21' 14.47" E
PSN B	MAX A332	44° 05' 47.79" N	015° 21' 15.42" E
PSN C	MAX A346	44° 05' 44.50" N	015° 21' 15.77" E
PSN D	MAX B738	44° 05' 48.45" N	015° 21' 16.74" E
PSN E	MAX A321	44° 05' 46.00" N	015° 21' 16.70" E

OVA STRANICA JE NAMJERNO OSTAVLJENA PRAZNA  
THIS PAGE INTENTIONALLY LEFT BLANK