

VISUAL OPERATION CHART

ZAGREB / Bratina
CROATIA

ZAGREB RADAR 120.700	ZAGREB TOWER 118.300
FIS ZAGREB 135.050	BRATINA RADIO 123.500

AD ELEV 377ft	ARP 45° 37' 03" N 015° 47' 41" E
---------------	--

Entry / Exit Points:		
W1	Town Jastrebarsko	Reporting Point
S1	Village Pokupsko	Reporting Point
Karlovac	Town Karlovac	



Contact BRATINA RADIO normally at Entry / Exit points

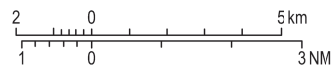
5 minutes prior to entering controlled airspace,
two-way radio communication required.

FLYING IN ATZ
IS LIMITED BY ROAD
KUPINEC - BRATINA

ATTENTION:
For latest information consult relevant publications, and NOTAMS!
Prominent transmission lines data not complete!
No guarantee for the completeness and accuracy of obstacles!

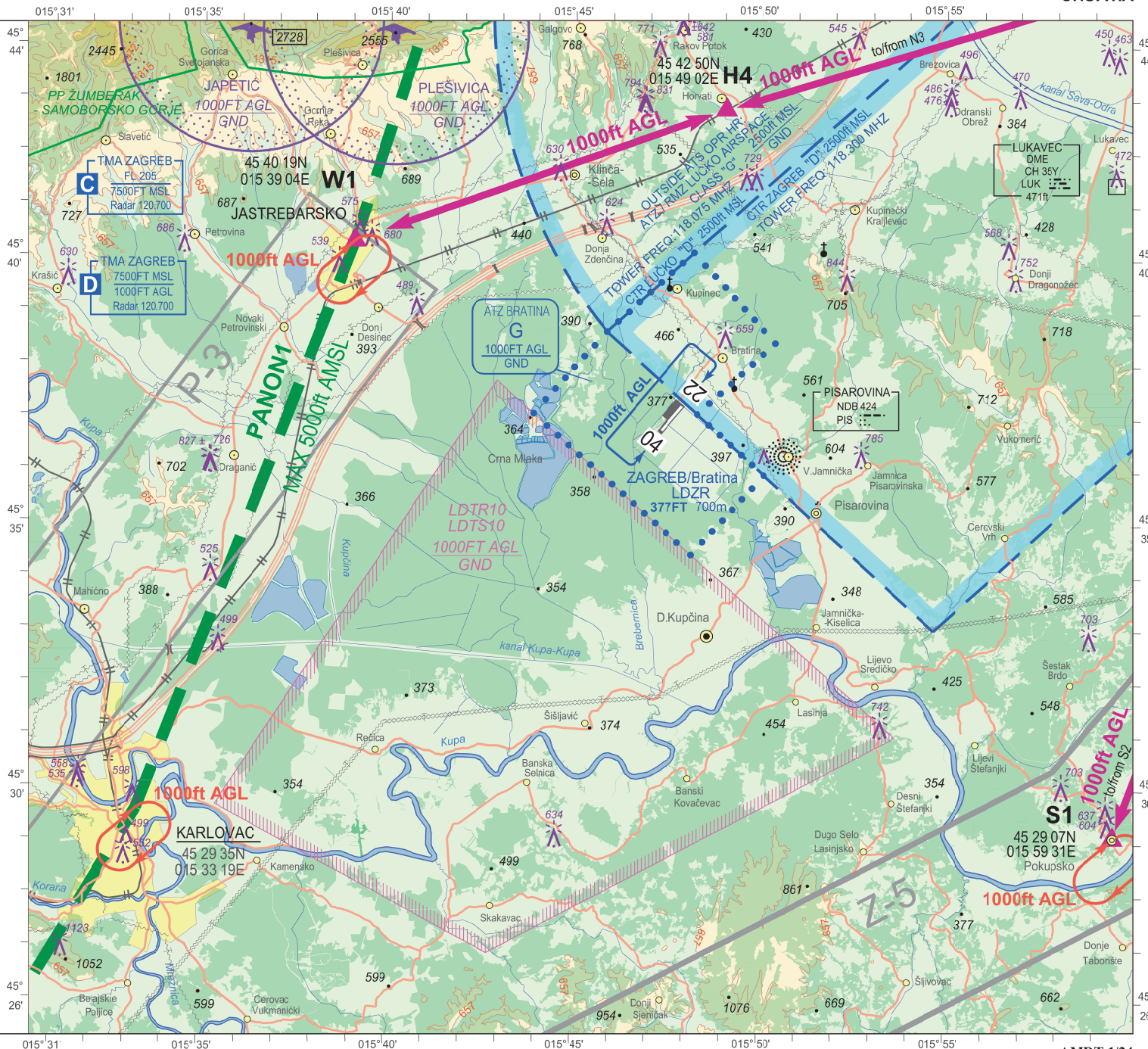
CONVERSION SCALE			
(m)	ft	ELEVATION TINTS	Metres Feet
(1000)	3281		1000 3000
(800)	2625		800 2000
(600)	1969		600 2000
(400)	1312		400 1000
(200)	656		200 1000
(0)	0		0 m 0 ft

SCALE 1:200 000



ALTITUDES AND ELEVATIONS IN FT

VAR 4° E 2019



CHANGE: TMA Zagreb class of airspace.

**OVA STRANICA JE NAMJERNO OSTAVLJENA PRAZNA
THIS PAGE INTENTIONALLY LEFT BLANK**