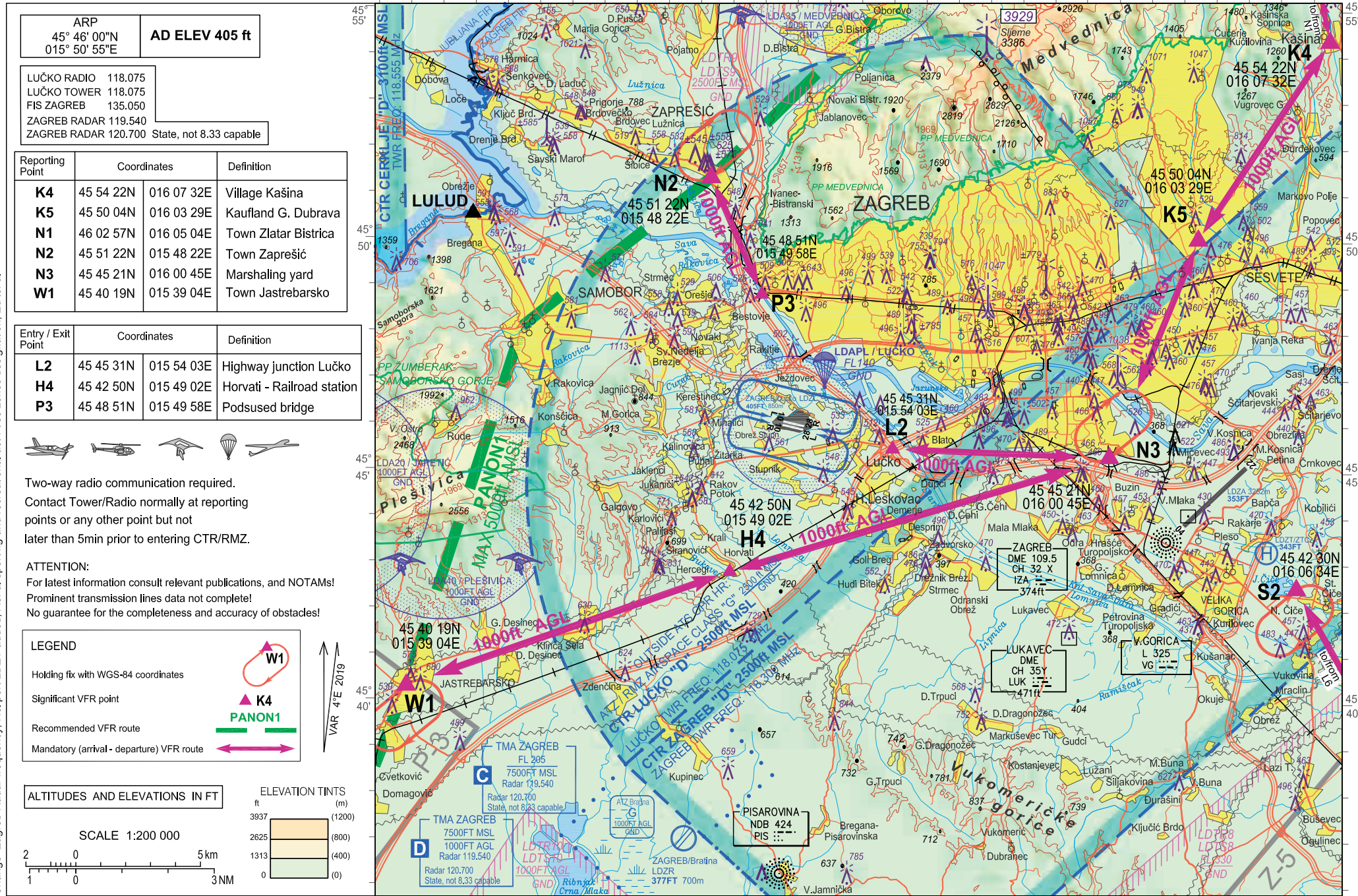


VISUAL  
OPERATION CHART

ZAGREB / Lučko (LDZL)



ARP  
45° 46' 00"N  
015° 50' 55"E

**AD ELEV 405 ft**

LUČKO RADIO 118.075  
LUČKO TOWER 118.075  
FIS ZAGREB 135.050  
ZAGREB RADAR 119.540  
ZAGREB RADAR 120.700 State, not 8.33 capable

Reporting Point	Coordinates	Definition
<b>K4</b>	45 54 22N 016 07 32E	Village Kašina
<b>K5</b>	45 50 04N 016 03 29E	Kaufland G. Dubrava
<b>N1</b>	46 02 57N 016 05 04E	Town Zlatar Bistrica
<b>N2</b>	45 51 22N 015 48 22E	Town Zaprešić
<b>N3</b>	45 45 21N 016 00 45E	Marshaling yard
<b>W1</b>	45 40 19N 015 39 04E	Town Jastrebarsko

Entry / Exit Point	Coordinates	Definition
<b>L2</b>	45 45 31N 015 54 03E	Highway junction Lučko
<b>H4</b>	45 42 50N 015 49 02E	Horvati - Railroad station
<b>P3</b>	45 48 51N 015 49 58E	Podsused bridge



Two-way radio communication required.  
Contact Tower/Radio normally at reporting points or any other point but not later than 5min prior to entering CTR/RMZ.

**ATTENTION:**  
For latest information consult relevant publications, and NOTAMs!  
Prominent transmission lines data not complete!  
No guarantee for the completeness and accuracy of obstacles!

**LEGEND**

- Holding fix with WGS-84 coordinates
- Significant VFR point
- Recommended VFR route
- Mandatory (arrival - departure) VFR route

**ALTITUDES AND ELEVATIONS IN FT**

ELEVATION TINTS

ft	(m)
3937	(1200)
2625	(800)
1313	(400)
0	(0)

SCALE 1:200 000

Change: Zagreb Radar frequency; Heliport LDZT added; Aerial sporting and recreational activities zones designation; Editorial.

**OVA STRANICA JE NAMJERNO OSTAVLJENA PRAZNA  
THIS PAGE INTENTIONALLY LEFT BLANK**