

SPLIT RADAR 120.875	BRAC TOWER 118.025
	BRAC RADIO 118.025
	HVAR RADIO 124.500

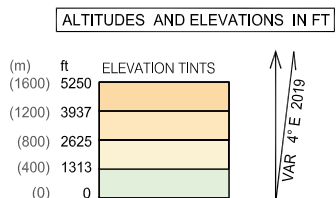
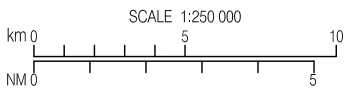
AD ELEV 1781	ARP 43°17'09"N 016°40'47"E
---------------------	----------------------------------

Reporting Point	Definition
C3	Village Grohote
D3	Town Stari Grad
H3	Town Supetar
K3	Town Sumartin
O3	Town Omiš
V2	Village Vlaka



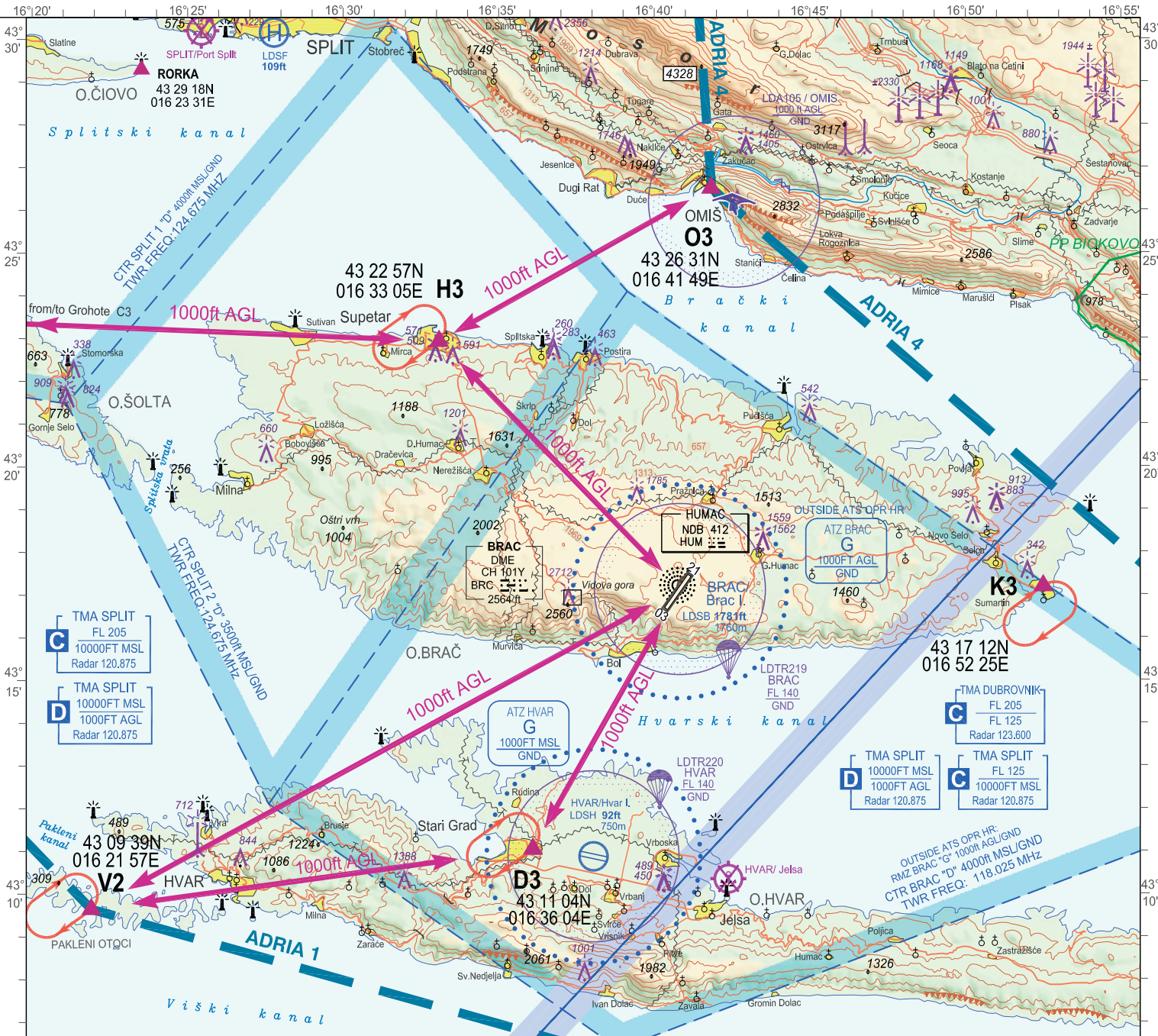
Two-way radio communication required.
Contact Tower normally at reporting points or any other point but not later than 5min prior to entering CTR/RMZ.

ATTENTION:
For latest information consult relevant publications, and NOTAMS!
Prominent transmission lines data not complete!
No guarantee for the completeness and accuracy of obstacles!



LEGEND

- Holding fix with WGS-84 coordinates
- Significant VFR point
- Recommended VFR route
- Mandatory (arrival - departure) VFR route



CHANGE: TMAs classification vertical limits; Parachute activity zones added; Flight altitude of recommended VFR routes removed; Editorial.

**OVA STRANICA JE NAMJERNO OSTAVLJENA PRAZNA
THIS PAGE INTENTIONALLY LEFT BLANK**