

VISUAL OPERATION CHART

OSIJEK/Klisa
CROATIA

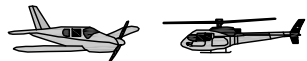
ARP 45°27'46"N 018°48'37"E	AD ELEV 291
----------------------------------	--------------------

OSIJEK APPROACH	118.800
OSIJEK TOWER	118.800
OSIJEK RADIO	118.800

FOR LDOS ATS OPERATIONAL HOURS
CONSULT RELEVANT PUBLICATIONS

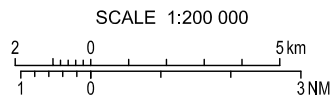
Reporting Point	Definition
A1	Village Koška
B1	Town Valpovo
C1	Village Josipovac
D1	Village Sarvaš
E1	Village Vrpolje
F1	Town Vinkovci
G1	Village Silaš
H1	Reporting point TUVAR

Two-way radio communication required.
Contact Tower normally at reporting points or any other point but not later than 5min prior to entering CTR/RMZ.



ATTENTION:
For latest information consult relevant publications, and NOTAMs!
Prominent transmission lines data not complete!
No guarantee for the completeness and accuracy of obstacles!

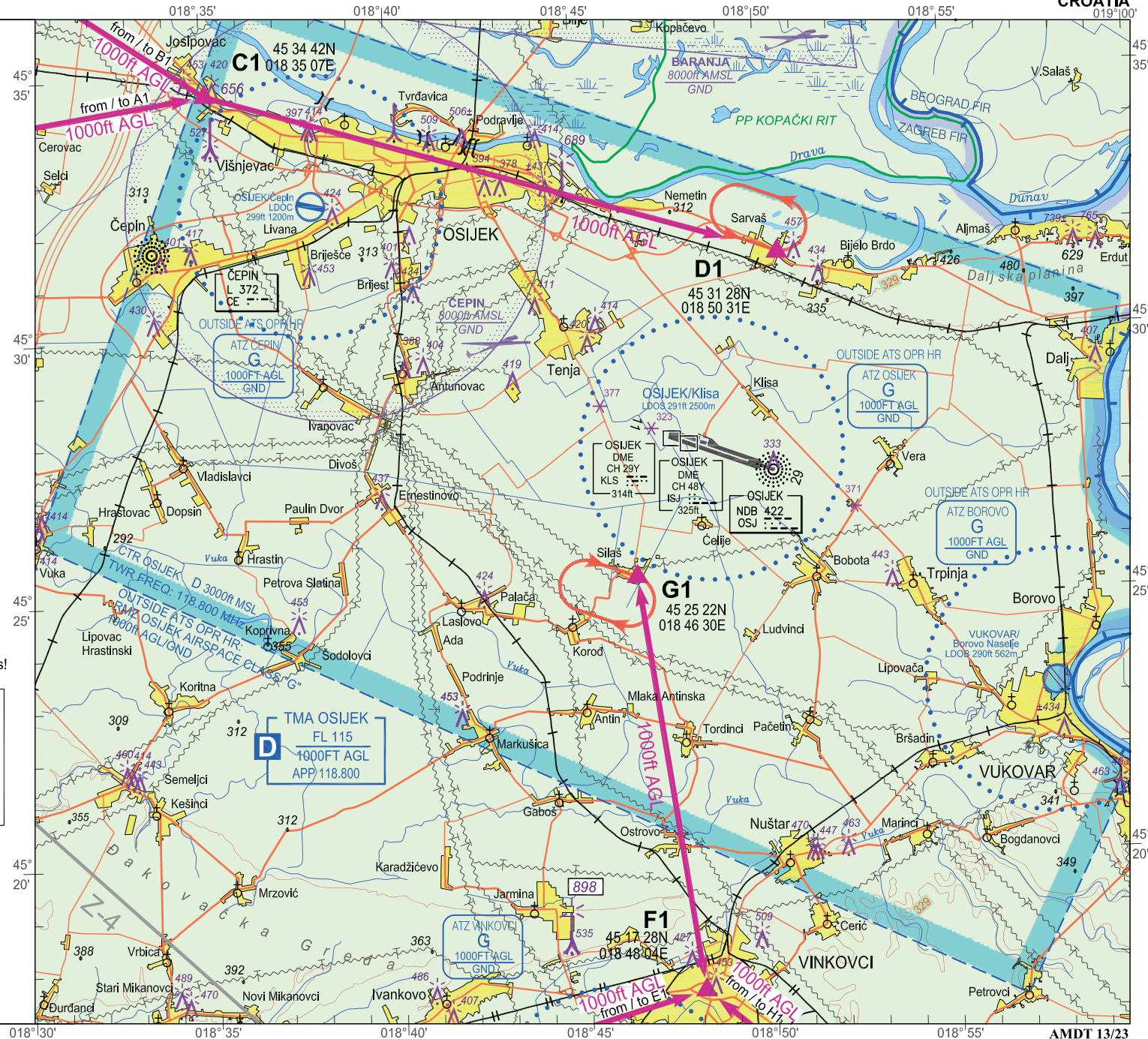
LEGEND	
Holding fix with WGS-84 coordinates	G1 45 25 22N 018 46 30E
Significant VFR point	F1
Mandatory (arrival - departure) VFR route	



ALTITUDES AND ELEVATIONS IN FT

(m)	ft	ELEVATION TINTS
(400)	1313	
(0)	0	

VAR 5° E 2019



CHANGE: New chart.

**OVA STRANICA JE NAMJERNO OSTAVLJENA PRAZNA
THIS PAGE INTENTIONALLY LEFT BLANK**