

Phone: +385 1 6259 373
+385 1 6259 589
+385 1 6259 372
Fax: +385 1 6259 374
AFS: LDZAYOYX
Email: aip@crocontrol.hr
URL: <http://www.crocontrol.hr>



**HRVATSKA KONTROLA
ZRAČNE PLOVIDBE**

Hrvatska kontrola zračne plovidbe d.o.o.
Odjel zrakoplovnog informiranja
Rudolfa Fizira 2
10410 Velika Gorica, p.p. 103
Hrvatska

AIP SUP 015/2017
Na snazi od: 12-Oct-2017
Vrijedi do: UFN
Datum izdavanja: 31-Aug-2017

LDOS - OSIJEK/Klisa - Novi PBN instrumentalni postupak prilaženja za RWY 11

Novi PBN instrumentalni postupak prilaženja za RWY 11 temeljen na GNSS-u je raspoloživ za korištenje na zračnoj luci OSIJEK/Klisa.

Ovim PBN instrumentalnim postupkom podržane su sljedeće operacije prilaženja:

- Neprecizno prilaženje (NPA) do LNAV minimuma;
- APV postupak prilaženja s barometarskim vertikalnim navođenjem (APV Baro-VNAV) do LNAV/VNAV minimuma.

Sastavni dio ovog AIP SUP-a je LDOS RNAV (GNSS) RWY 11 - ICAO karta s pripadajućim RNAV tablicama kodiranja i popisom putnih točaka (waypoint list).

Upišite AIP SUP 015/2017 u GEN 0.3.

Ref AIP: LDOS AD 2

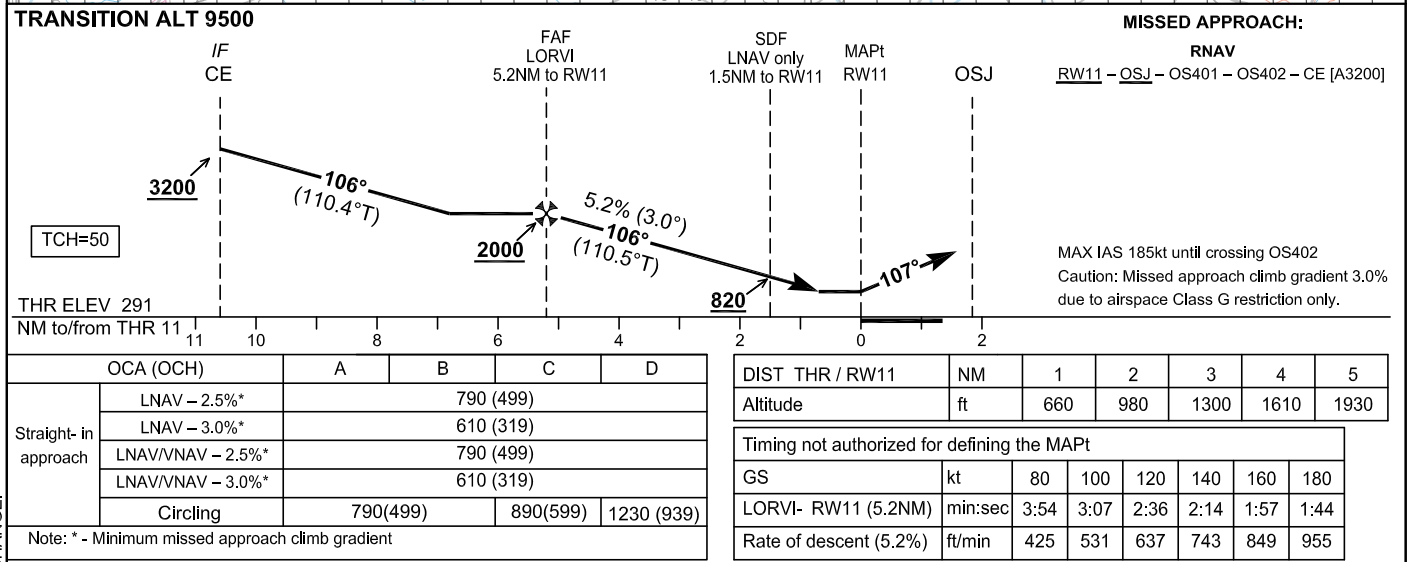
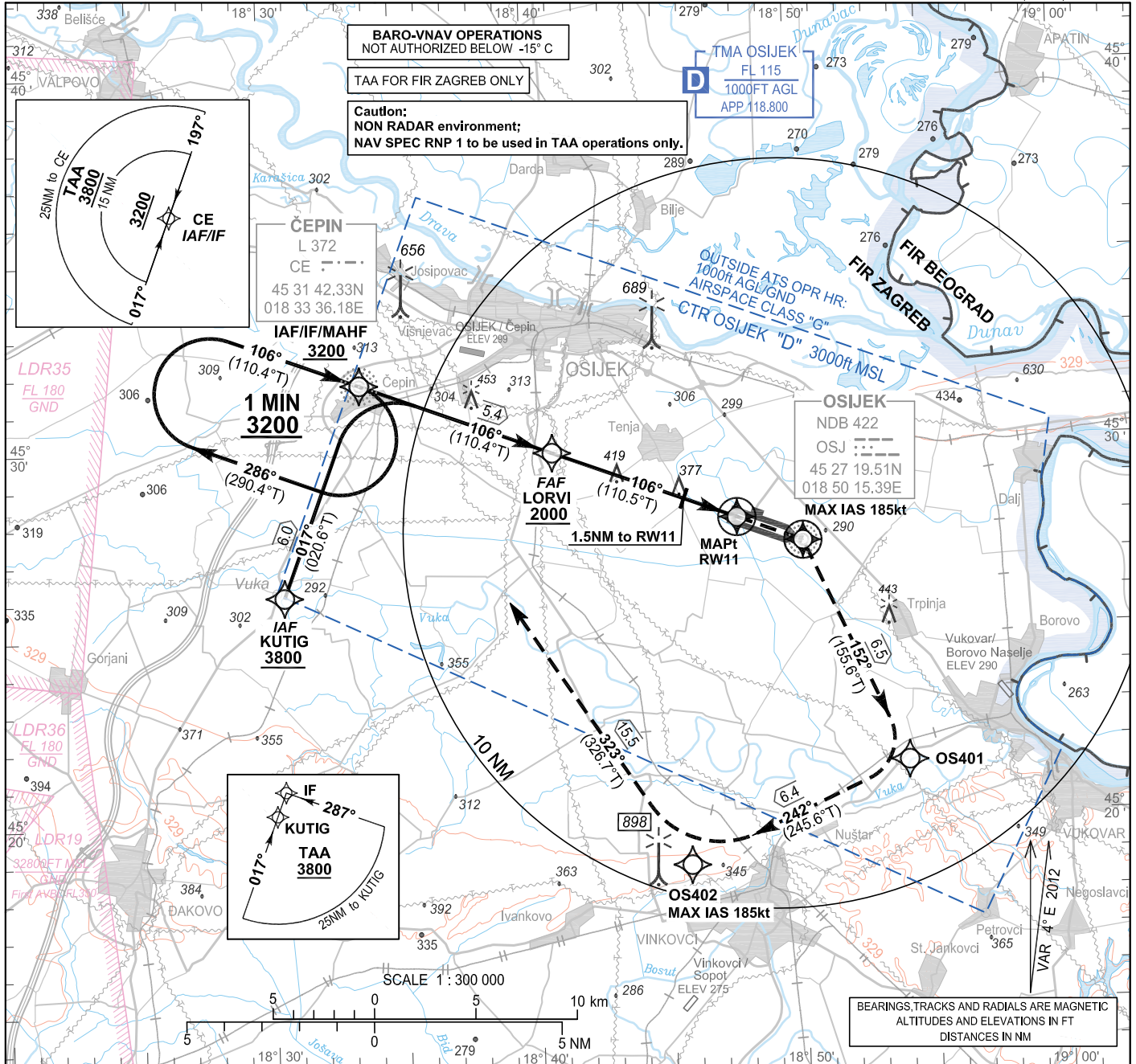
OVA STRANICA JE NAMJERNO OSTAVLJENA PRAZNA

INSTRUMENT APPROACH
CHART-ICAO

AD ELEV 291
HEIGHTS RELATED
TO THR 11 ELEV 291

OSIJEK APPROACH 118.800
OSIJEK TOWER 118.800

OSIJEK / Klisa
CROATIA
RNAV (GNSS) RWY 11



CHANGE:

OSIJEK / Klisa

CROATIA

RNAV_(GNSS) RWY 11**LDOS RNAV (GNSS) RWY11**

Proposed tabular description for navigation database coding - APPROACH TRANSITION

Serial Number	Fix	Path descriptor	Waypoint name	Flyover	Course °M (°T)	Magnetic Variation	Distance (NM)	Turn direction	Altitude (ft)	Speed (kt)	VPA/TCH (°/ft)	Remarks	NAV SPEC
010	IAF	IF	KUTIG	-	-	4.00°E	-	-	+3800	-	-	-	RNP APCH
020	IF	TF	CE	-	017° (020.6°T)	4.00°E	6.0	-	+3200	-	-	-	
010	IAF / IF	IF	CE	-	-	4.00°E	-	-	+3200	-	-	-	RNP APCH

Proposed tabular description for navigation database coding - FINAL TRANSITION

Serial Number	Fix	Path descriptor	Waypoint name	Flyover	Course °M (°T)	Magnetic Variation	Distance (NM)	Turn direction	Altitude (ft)	Speed (kt)	VPA/TCH (°/ft)	Remarks	NAV SPEC
010	IF	IF	CE	-	-	4.00°E	-	-	+3200	-	-	-	RNP APCH
020	FAF	TF	LORVI	-	106° (110.4°T)	4.00°E	5.4	-	+2000	-	-	-	
030	MAPt	TF	RW11	Y	106° (110.5°T)	4.00°E	5.2	-	-	-	3.0 / 50.0	-	
040	-	TF	OSJ	Y	107° (110.5°T)	4.00°E	1.9	-	-	-	-	-	
050	-	TF	OS401	-	152° (155.6°T)	4.00°E	6.5	-	-	-	-	-	
060	-	TF	OS402	-	242° (245.6°T)	4.00°E	6.4	R	-	-185	-	-	
070	MAHF	TF	CE	-	323° (326.7°T)	4.00°E	15.5	-	3200	-	-	-	
080	MAHF	HM	CE	-	106° (110.4°T)	4.00°E	1 MIN	R	3200	-	-	Holding above 3200ft on ATC clearance only	

RNAV HOLDING tabular description

Waypoint name	Path Terminator	Inbound course °M (°T)	Leg time/distance NM	Turn direction	Minimum altitude FT	Maximum altitude FT	Speed limit MAX IAS	Magnetic variation	Remarks	NAV SPEC
CE	HM	106° (110.4°T)	1MIN / -	R	3200	-	-	4°E	-	RNP 1

Waypoint coordinates

Waypoint name	WGS-84 Latitude	WGS-84 Longitude
KUTIG	452605.5N	0183035.9E
CE	453142.33N	0183336.18E
LORVI	452948.1N	0184050.9E
RW11	452758.68N	0184746.96E
OS401	452124.5N	0185404.1E
OS402	451844.5N	0184544.9E
OSJ	452719.51N	0185015.39E